

Qualitymatters™

the newsletter of Clark Contracts

Autumn 2016

➔ clarkcontracts.com



New Livingston Store for Lidl UK GmbH

Also featured:

- The Weir Group
- The University of Edinburgh
- Cove Park Enterprises

 **clark
contracts**

• construction • refurbishment • maintenance



Construction of new store in Livingston

Architect: RDA

M&E Engineer: Fairhurst



Principal Designer: Santia



Fit Out of The Weir Groups new office at 1 West Regent Street, Glasgow

PM: Gardiner & Theobald

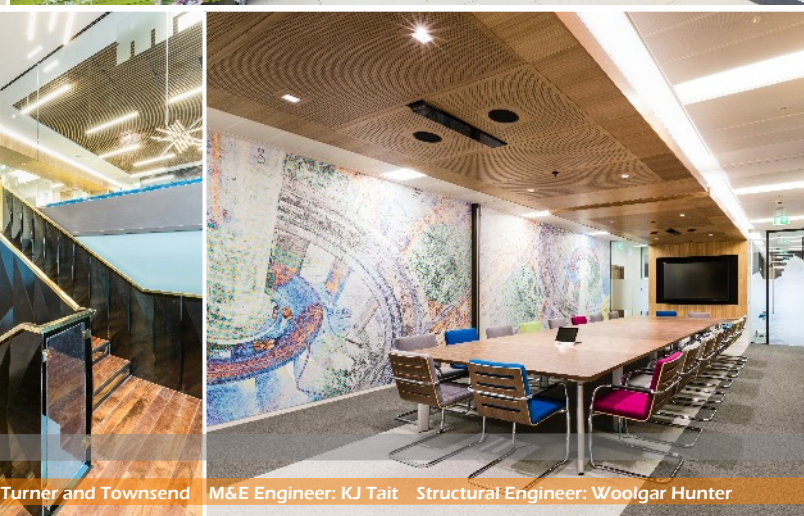
Architect: NORR

Interior Designer: haa design

Surveyor: Turner and Townsend

M&E Engineer: KJ Tait

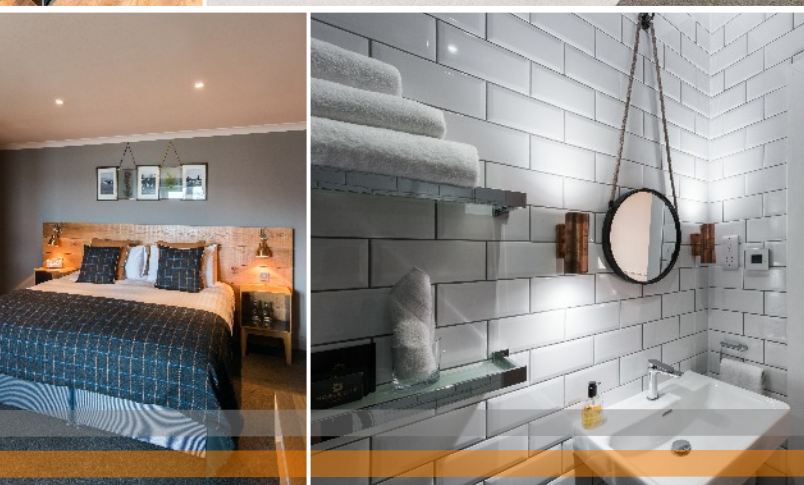
Structural Engineer: Woolgar Hunter



Internal Refurbishment of the Harbour Inn, Islay

Architect: Surface ID

Surveyor: Gardiner and Theobald



Construction of a new Artists Centre at Cove Park, Helensburgh

Architect: Cameron Webster Architects

Surveyor: Doig + Smith



M&E Engineer: Max Fordham

Structural Engineer: ATK Partnership

clark
contracts

● construction ● refurbishment ● maintenance



Follow us for regular updates on company news